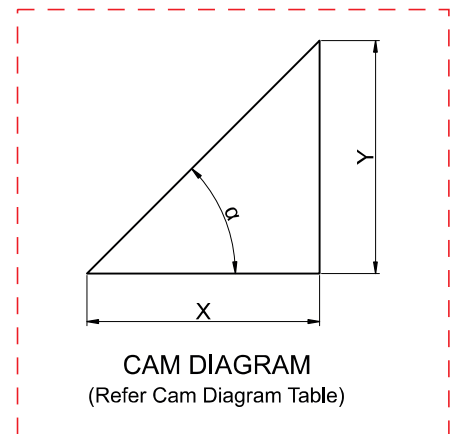
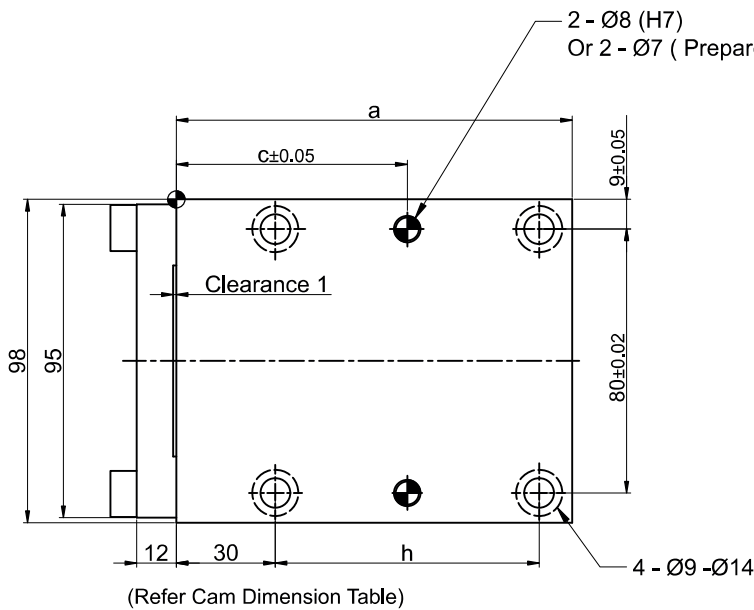
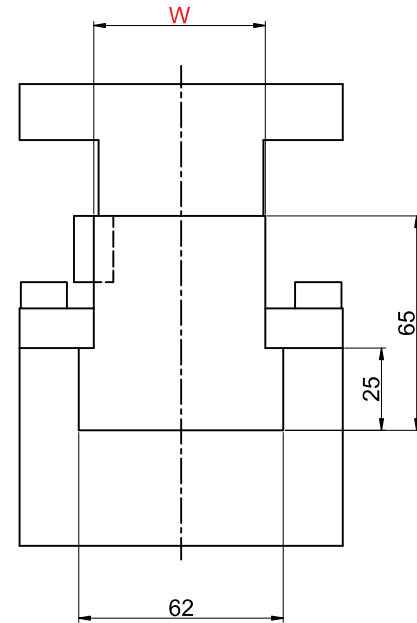
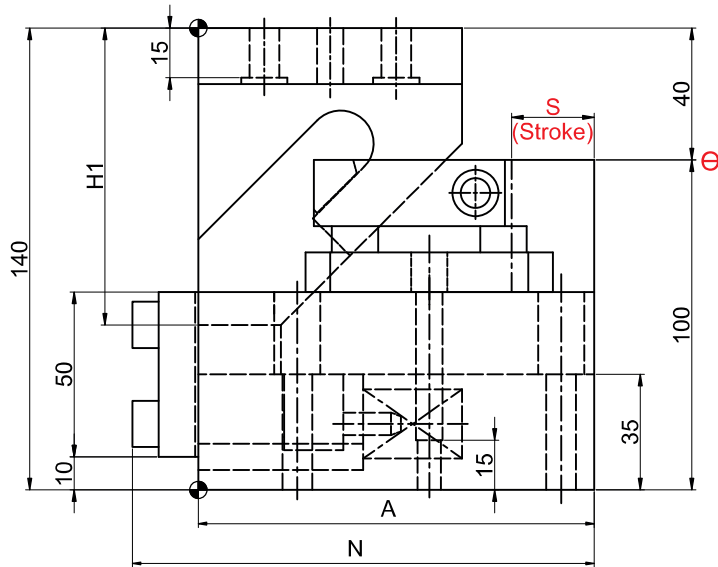
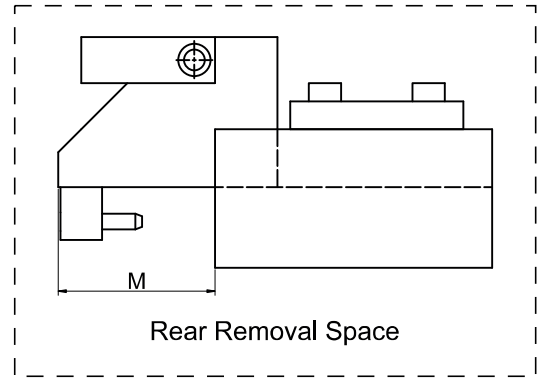
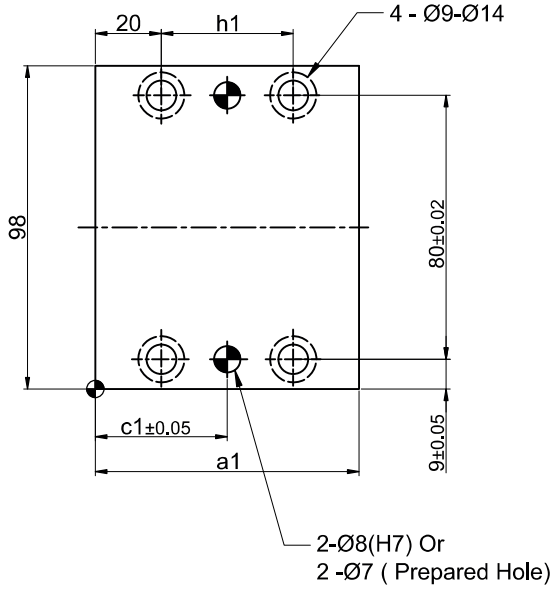


► Cam Unit - PCU-CS1-52 (00)



## ► Cam Unit - PCU-CS1-52 (00)

Cam Dimensions													Cam Diagram		
W	Θ	S	A	H1	N	a	a1	c	c1	h	h1	M	X	Y	α
52	00	25	120	90	140	120	80	70	40	80	40	68	25	25	45°
		40	135	100	155	135	90	80	45	95	50	58	40	40	
		60	180	120	200	180	110	55	55	140	70	60	60	60	

Spring Force									
Working force KN(tonf)		Spring load N (kgf)			Total weight kg	Catalog No.	W	Θ	Slide Stroke S
Standard working force	Max. working force	Preload	5 mm before bottom dead centre	Max. load.					
14.7 (1.5)	29.4 (3.0)	144 (14.7)	504 (51.4)	594 (60.6)	8.0	PCU-CS1	52	00	25
		101 (10.3)	542 (55.2)	605 (61.7)	8.0				40
		109 (11.1)	571 (58.2)	613 (62.5)	14.0				60

**Order Type - Code-Size(W)-Θ-Stroke(S)**

**Example - PCU-CS1-52-00-25**