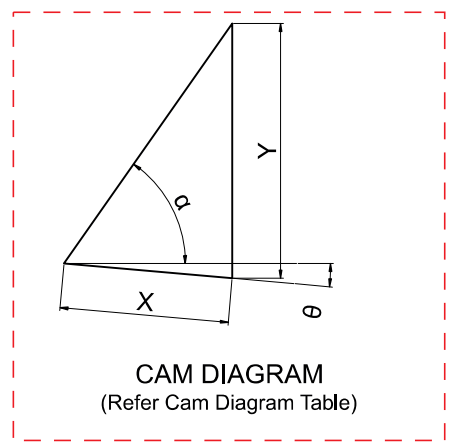
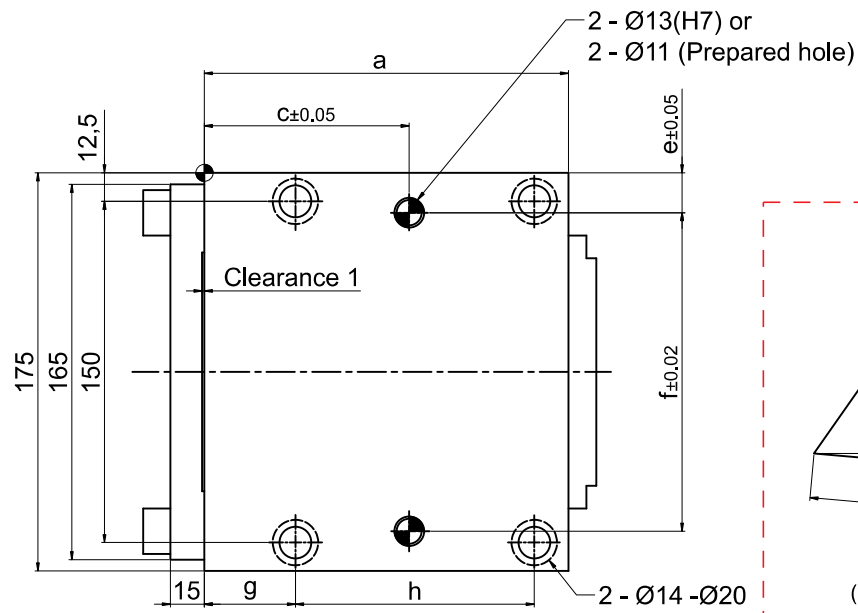
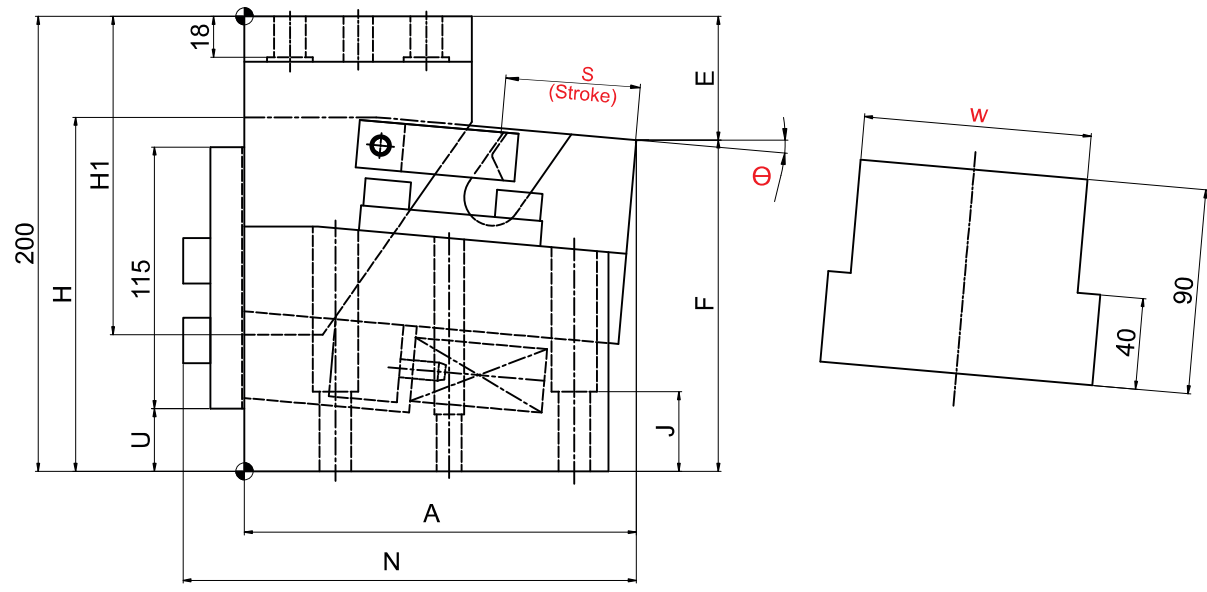
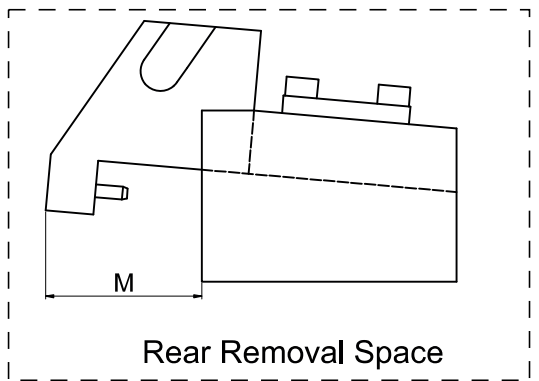
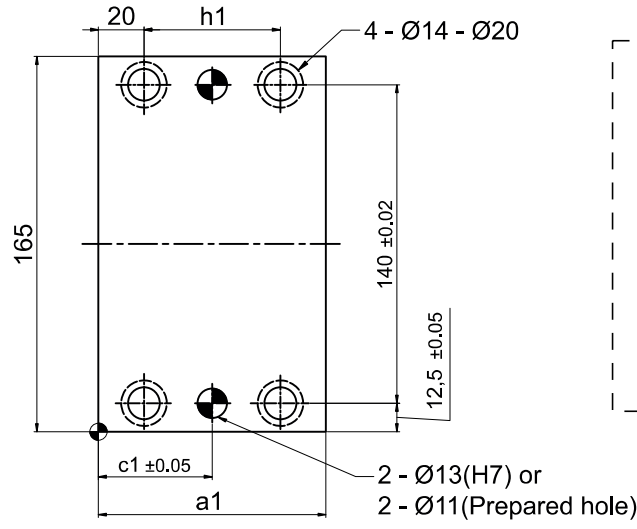


► Cam Unit - PCU-CS1-100-(05-20)



(Refer Cam Dimension Table)

► Cam Unit - PCU-CS1-100-(05-20)

Cam Dimensions																				Cam Diagram			
W	Θ	S	A	E	F	H	H1	J	N	U	a	a1	c	c1	e	f	g	h	h1	M	X	Y	α
100	05°	45	172.22	54.72	145.28	155.6	140	35	199.22	27.5	160	100	90	50	17.5	140	40	105	60	98	45	67.9	55°
		70	207.08	52.77	147.23	161.1	160	40	234.08	30	190	120	70	60	12.5	150	45	130	80	90	70	105.7	
	10°	45	178.12	65.02	134.98	156.8	140	35	205.12	30	160	100	90	50	17.5	140	40	105	60	103	45	60.6	50°
		70	212.59	66.10	133.90	161.6	160	40	239.59	30	190	120	70	60	12.5	150	45	130	80	95	70	94.3	
	15°	45	182.67	70.77	129.23	160	125	40	209.67	32.5	160	100	90	55	17.5	140	40	105	70	106	45	55.1	45°
		70	216.48	69.83	130.17	171.5	130	40	243.48	35	190	130	70	65	12.5	150	45	130	90	98	70	85.7	
	20°	45	185.83	81.86	118.14	161.2	120	40	212.83	35	160	100	90	55	17.5	140	40	105	70	109	45	50.8	40°
		70	218.72	78.83	121.17	179.5	130	40	245.72	45	190	130	70	65	12.5	150	45	130	90	98	70	79.1	

Spring Force									
Working force KN(tonf)		Spring load N (kgf)			Total weight Kg	Catalog No.	W	Θ	Slide Stroke S
Standard working force	Max. working force	Preload	5 mm before bottom dead centre	Max. load.					
39.2 (4.0)	78.5 (8.0)	263 (26.8)	1015 (103.5)	1109 (113.1)	33.0	PCU-CS1	100	05°	45
		194 (19.8)	1065 (108.6)	1132 (115.5)	38.0				70
		263 (26.8)	1015 (103.5)	1109 (113.1)	33.0			10°	45
		194 (19.8)	1065 (108.6)	1132 (115.5)	38.0				70
		263 (26.8)	1015 (103.5)	1109 (113.1)	33.0			15°	45
		194 (19.8)	1065 (108.6)	1132 (115.5)	38.0				70
		263 (26.8)	1015 (103.5)	1109 (113.1)	32.0			20°	45
		194 (19.8)	1065 (108.6)	1132 (115.5)	39.0				70

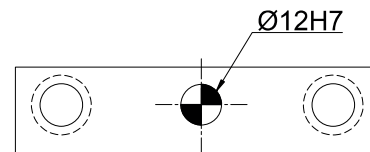
Order Type - Code-Size(W)-Θ-Stroke(S)

Example - PCU-CS1-100-05-45



Alternations-

Option Code(OC)	Specifications
N12	Change dowel hole diameter Ø12H7.



Order Type:- CODE-SIZE(W)-Θ-STROKE(S)-OC

Example:- PCU-CS1-100-05-45-N12