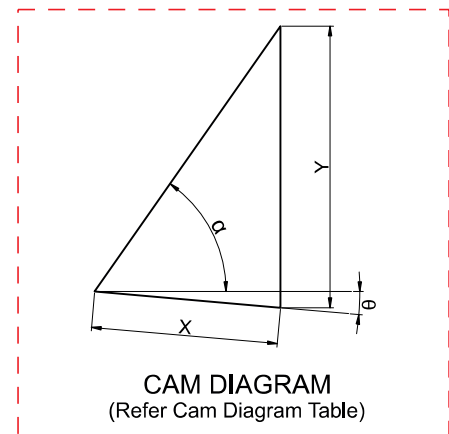
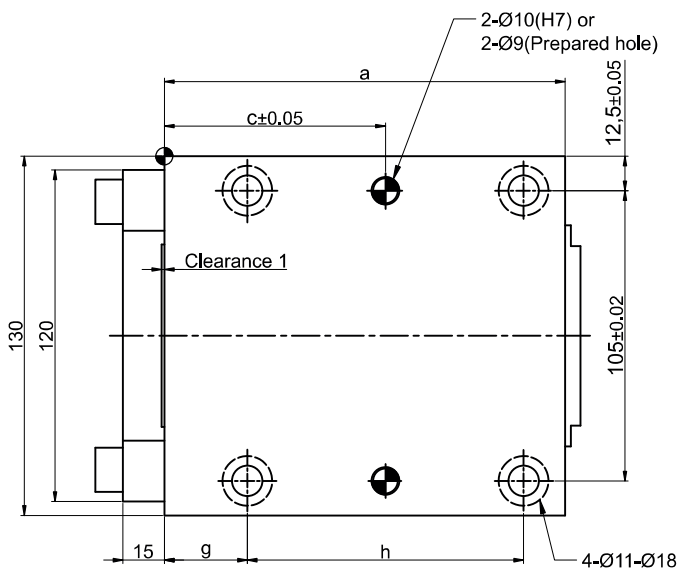
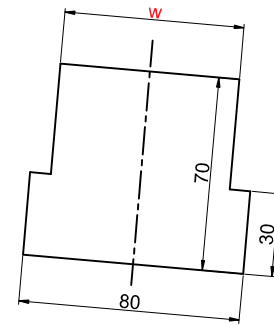
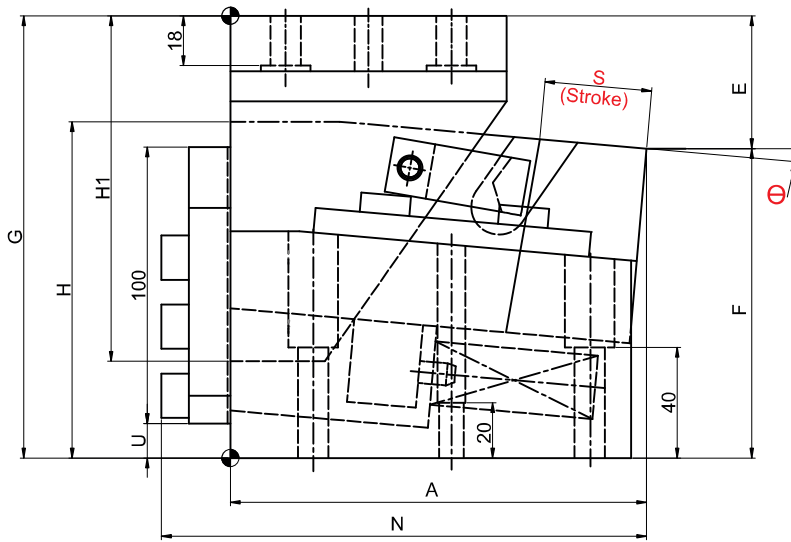
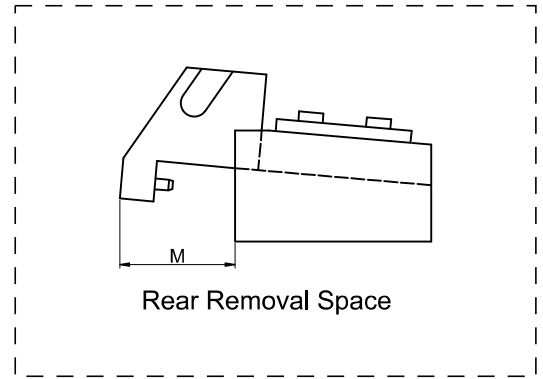
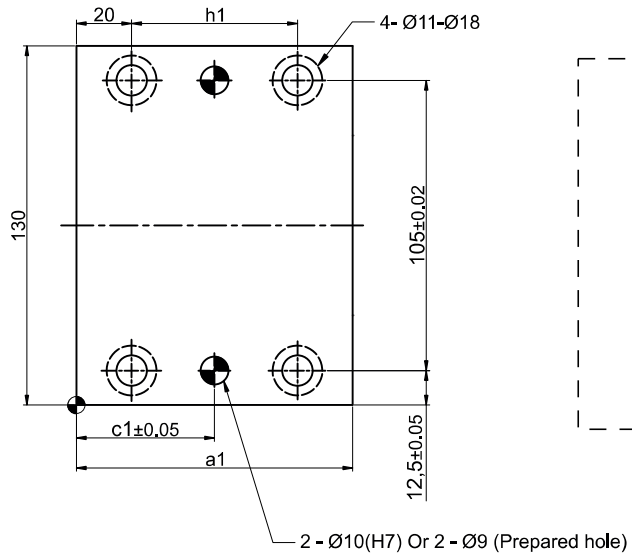


► Cam Unit - PCU-CS1-65-(05-20)



(Refer Cam Dimension Table)

► Cam Unit - PCU-CS1-65-(05-20)

Cam Dimensions																		Cam Diagram						
W	Θ	S	A	E	F	G	H	H1	U	N	a	a1	c	c1	g	h	h1	M	X	Y	α			
65	05°	45	150.55	47.90	112.10	160	121.7	125	12.5	175.55	145	100	80	50	30	100	60	85	45	67.9	55°			
		70	195.38	46.83	123.17	170	158.1	145	25	220.38	180		65		40	125		83	70	105.7				
	10°	45	154.95	51.24	108.76	160	129.1	115	20	179.95	145		79		50	30		100	60	89	45	60.6	50°	
		70	199.27	59.06	110.94	170	138.9	145	25	224.27	180		65		40	125		85	70	94.3				
	15°	45	158.18	64.91	105.09		133.7	115	25	183.18	145		80		30	100		91	45	55.1	45°			
		70	201.64	66.56	103.44		161.5	125	40	226.64	180		110		65	55		40	125	70		88	70	85.7
	20°	45	160.20	68.81	101.19		138.9	105	30	185.20	145		100		80	50		30	100	60	93	45	50.8	40°
		70	202.48	74.21	95.79		154.6	120	40	227.48	180		110		65	55		40	125	70	87	70	79.1	

Spring Force									
Working force KN(tonf)		Spring load N (kgf)			Total weight kg	Catalog No.	W	Θ	Slide Stroke S
Standard working force	Max. working force	Preload	5 mm before bottom dead centre	Max. load.					
19.6 (2.0)	39.2 (4.0)	176 (18.0)	680 (69.4)	743 (75.8)	20.0	PCU-CS1	65	05°	45
		190 (19.4)	918 (93.7)	974 (99.4)	25.0				70
		176 (18.0)	680 (69.4)	743 (75.8)	20.0			10°	45
		190 (19.4)	918 (93.7)	974 (99.4)	25.0				70
		176 (18.0)	680 (69.4)	743 (75.8)	21.0			15°	45
		190 (19.4)	918 (93.7)	974 (99.4)	25.0				70
		176 (18.0)	680 (69.4)	743 (75.8)	21.0			20°	45
		190 (19.4)	918 (93.7)	974 (99.4)	25.0				70

Order Type - Code-Size(W)-Θ-Stroke(S)

Example - PCU-CS1-65-05-45