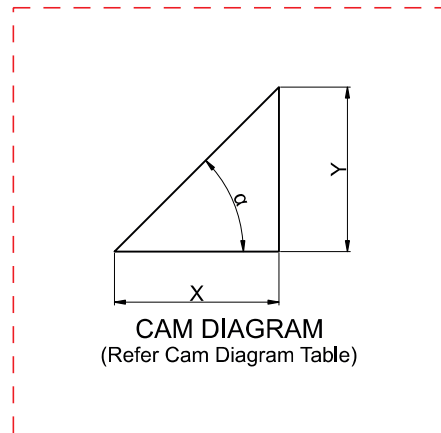
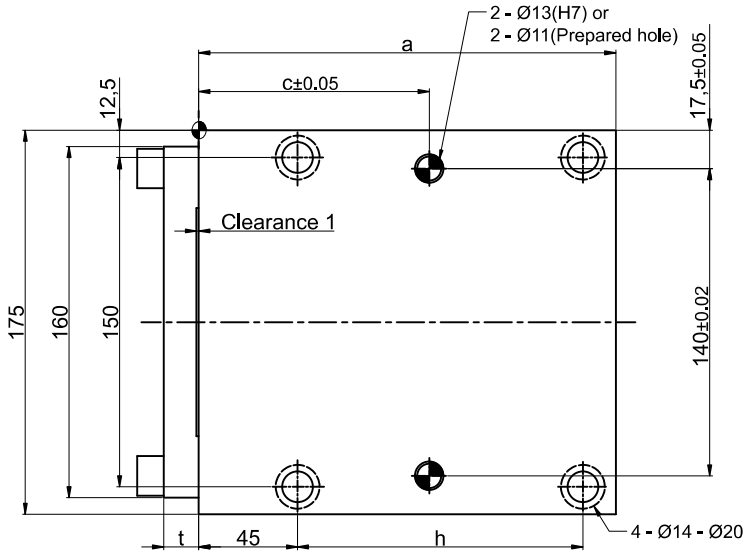
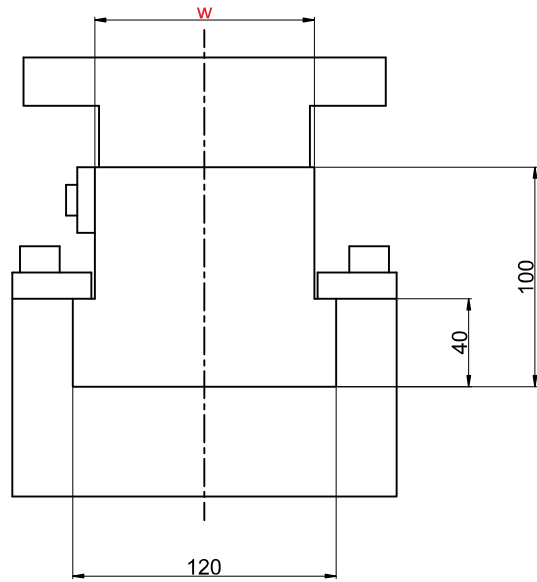
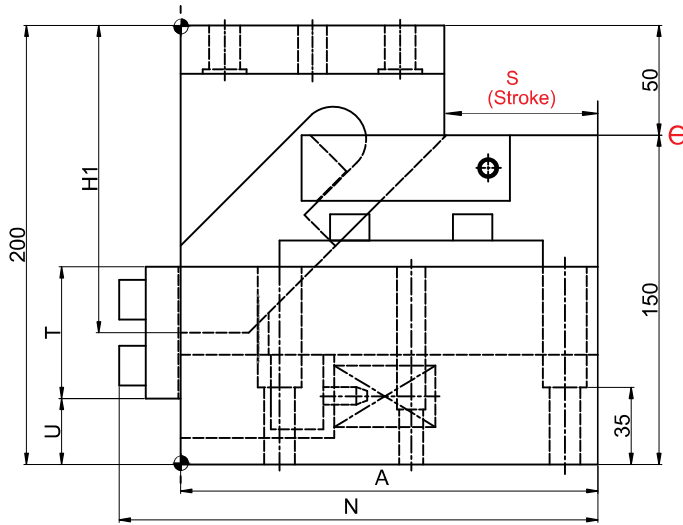
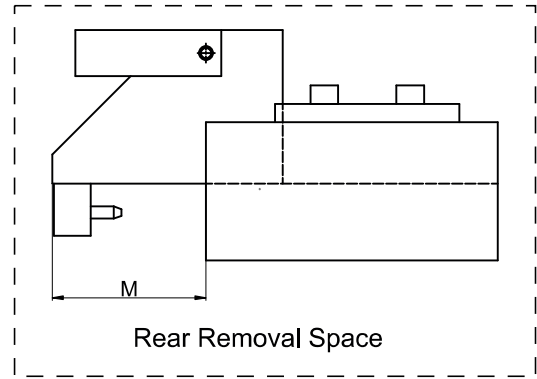
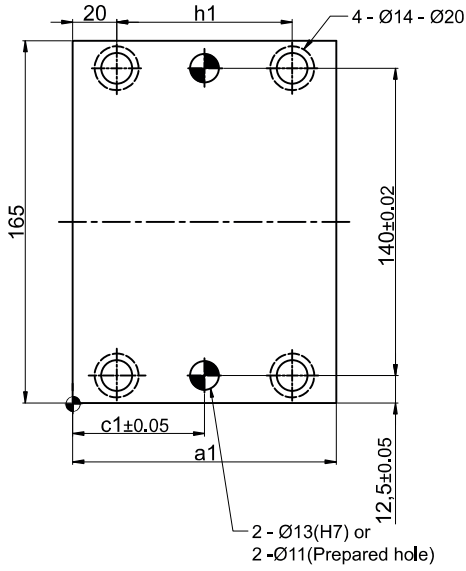


Cam Unit - PCU-CS1-100-(00)



(Refer Cam Dimension Table)

► Cam Unit - PCU-CS1-100-(00)

Cam Dimensions																Cam Diagram		
W	Θ	S	A	H1	N	T	U	a	a1	c	c1	h	h1	t	M	X	Y	α
100	00	40	190	140	218	60	30	190	120	105	60	130	80	16	100	40	40	45°
		60	210	160	238				140		70		100			60	60	
		80	250	170	277	115	10	220	150	135	75	160	110	15	110	80	80	

Spring Force									
Working force N(tonf)		Spring load N (kgf)			Total weight kg	Catalog No.	W	Θ	Slide Stroke S
Standard working force	Max. working force	Preload	5 mm before bottom dead centre	Max. load.					
29.4 (3.0)	58.8 (6.0)	189 (19.3)	1015 (103.5)	1133 (115.5)	37.0	PCU-CS1	100	00	40
		203 (20.7)	1061 (108.2)	1139 (116.1)	38.0				60
		170 (17.4)	1235 (126.0)	1306 (133.2)	44.0				80

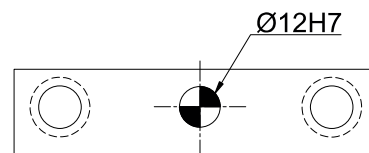
Order Type - Code-Size(W)-Θ-Stroke(S)

Example - PCU-CS1-100-00-40



Alternations-

Option Code(OC)	Specifications
N12	Change dowel hole diameter Ø12H7 .



Order Type:- CODE-SIZE(W)-Θ-STROKE(S)-OC

Example:- PCU-CS1-100-00-40-N12