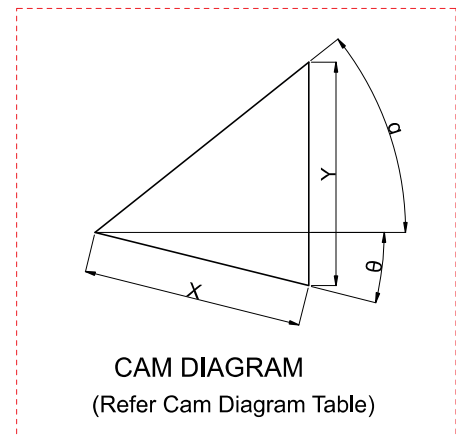
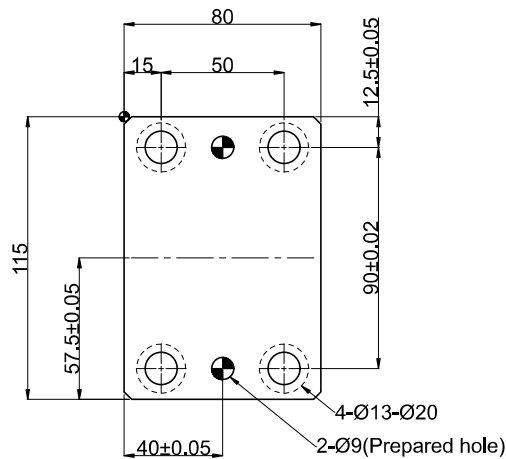
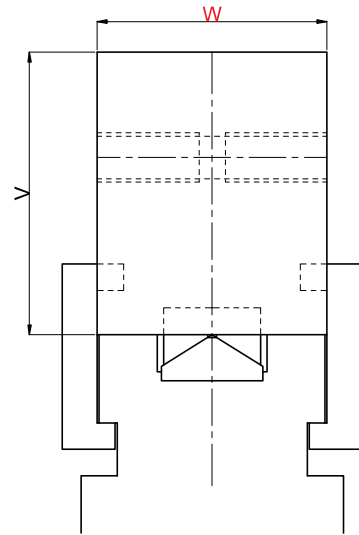
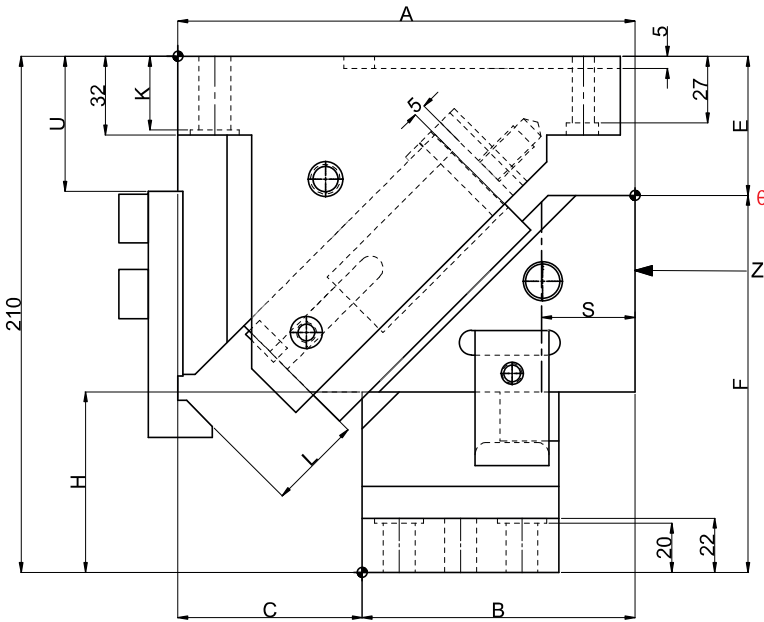
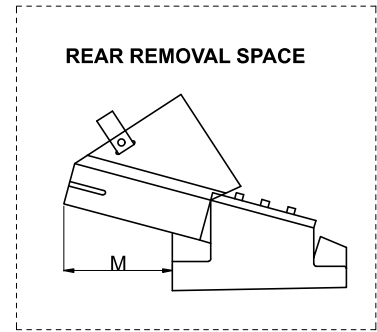
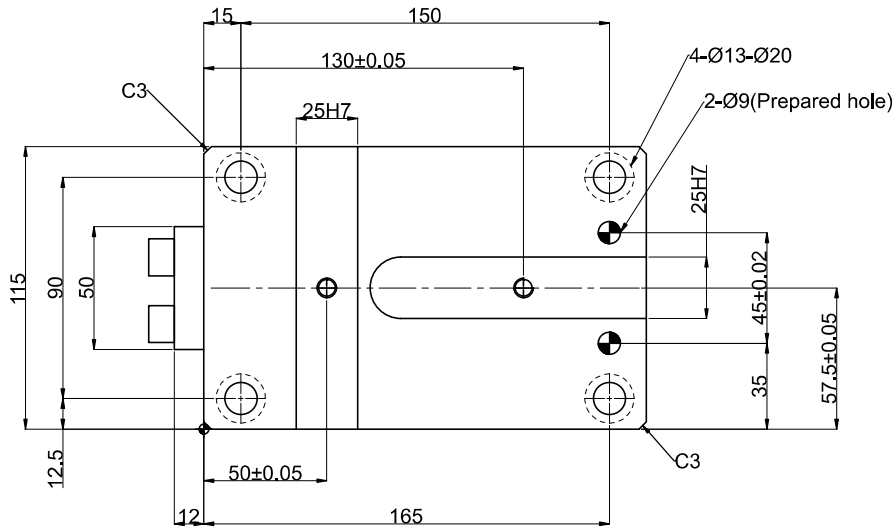


► Cam Unit - PCU-CS9-65-(00-70)



## ► Cam Unit - PCU-CS9-65-(00-70)

Cam Dimensions													Cam Diagram			
W	θ	A	B	C	E	F	H	K	L	U	V	m	X	Y	α	
65	00°	185.94	110.94	75	56.57	153.43	73.4	30	38	55	80	52	26.9	26.9	45°	
	05°	193.01	123.01	70			73.9				90		27	29.2		
	10°	196.80	126.80		67.58	142.42	83.5			61	80	31.6	27.3	35°		
	15°	203.77	113.47	68.81	141.19	84.7	90				32.2	30.1				
	20°	198.10	138.10	60	74.31	135.69	100.8		71	80	33.8	26.3	25°			
	25°	204.75	149.75	55	76.73	133.27	103.8			90	35	29.6				
	30°	193.63	143.63	50	89.52	120.48	111.0		30	80	79	33.5	24.5	15°		
	35°	199.76	154.76	45	93.06	116.94	105.0			90		35.4	28.1			
	40°	188.72	148.72	40	99.62	110.38	120.0		25	33	15	80	42.9	30.5	5°	
	45°	194.13	160.13	34	104.16	105.84	115.0		30			90	46.5	35.8		
	50°	190.00	160.00	30	110.00	100	130		18	35	10	100	87	54.5	41.7	0°
	55°		170.00	20	115.00	95								25	43.6	
	60°		190.00	0	130.00	80.00				20		110	92	50	43.3	
	65°		190.00	0	130.00	80.00								47.3	42.9	
	70°		190.00	0	130.00	80.00				58.5		54.9				

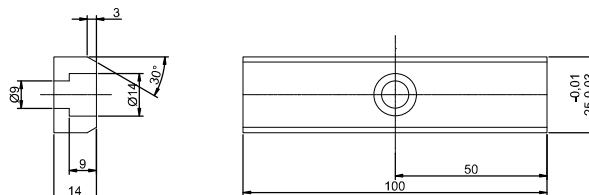
Spring Force									
Slide Stroke S	Working force KN (tonf)		Spring load N (kgf)			Total weight kg	Catalog Code	W	θ
	Standard working force	Max. working force	Preload	5mm before bottom dead center	Max. load				
26.9	19.6 (2.0)	39.2 (4.0)	166 (16.9)	898 (91.6)	1067 (108.8)	19.5	PCU-CS9	65	00°
27.0				972 (99.1)		19.8			05°
31.6			237 (24.2)	995 (101.5)	19.3	10°			
32.2				998 (101.7)	19.6	15°			
33.8			308 (31.4)	1014 (103.4)	18.1	20°			
35.0				1019 (103.9)	18.4	25°			
33.5			427 (43.5)	1031 (105.1)	17.7	30°			
35.4				1038 (105.9)	18.0	35°			
42.9			356 (36.3)	1048 (106.8)	16.9	40°			
46.5				1055 (107.5)	17.1	45°			
54.5			308 (31.4)	1062 (108.3)	16.8	50°			
43.6			297 (30.4)	953 (97.2)	17.8	1040 (106.0)			55°
50.0				965 (98.4)					17.3
47.3				829 (84.5)	18.5	891 (90.9)			65°
58.5				841 (85.7)					18.4

Order Type:-Code-Size(W)-θ

Example:-PCU-CS9-65-10

Alternations:-	
Option Code(OC)	Specification
K	Add 2 locating keys (With 2 hexagon socket head cap screws M8x15)

Alteration-cs9-65



Order Type:-Code-Size(W)-θ-OC

Example:-PCU-CS9-65-10-K