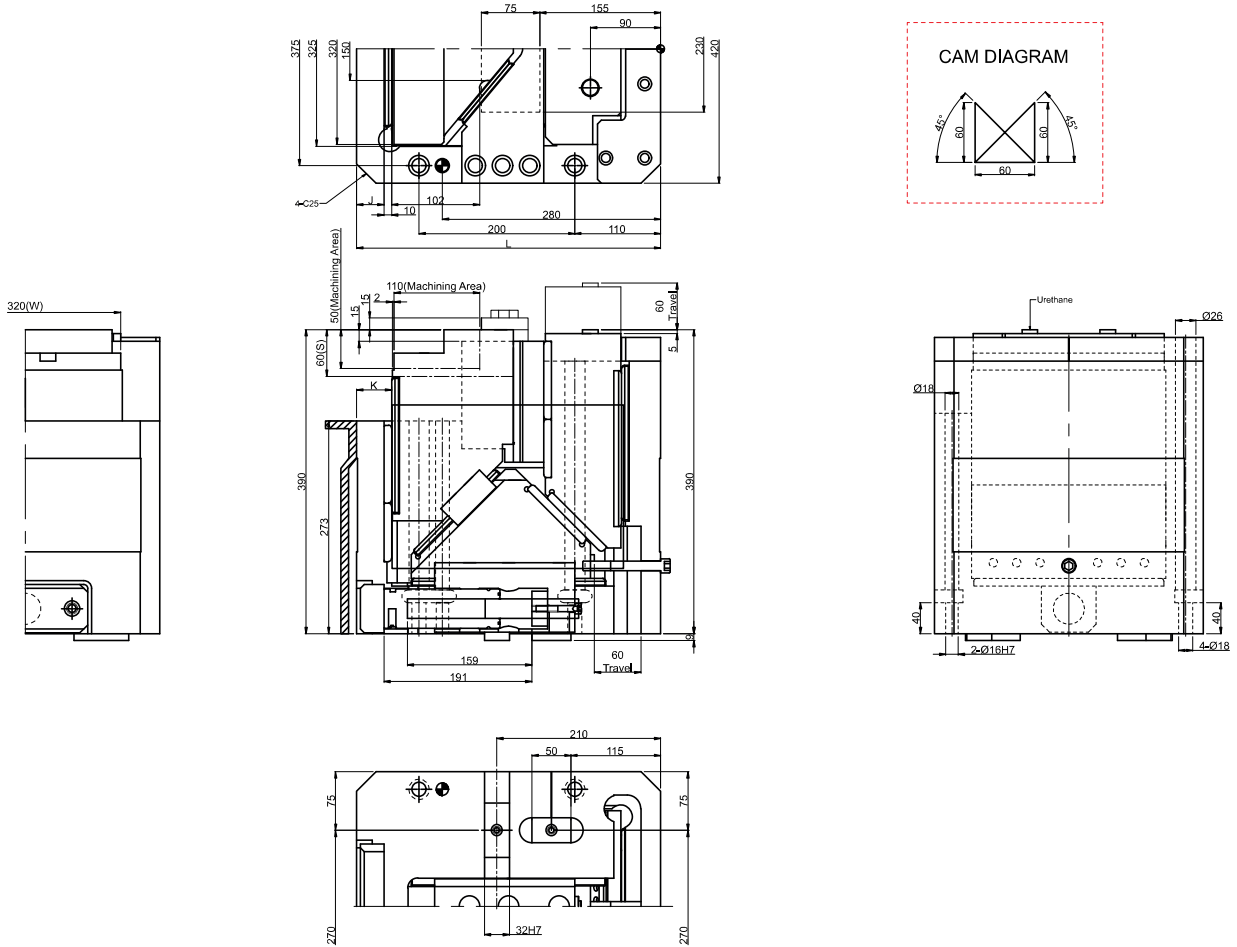


PCU-CS-12-320-60



▶ Cam Unit - PCU-CS-12-320(60)

Working Force kN(tonf)	Total Weight kg	Catalog No.	W	Stroke	Spring Type
Standard Working Force kN(tonf)					
156.8(16.0)	362	PCU-CS12	320	60	N - Force

Spring Specification

Spring PS	Spring Force N(kgf)	
	Initial Load	Final Load
N-Force	1164(118.7)	8148(830.9)

Option Code	Specification
S	End-position kit is included
NF	Nitrogen gas not charged

Specification

Catalog No.	J	K	L
PCU-CS12	35	45	390

Order Type:- CODE-SIZE(W)-θ

Example:- PCU-CS12-320-45

Alternations-	
Option Code (OC)	Specifications
S	End-position kit is included.
NF	Nitrogen gas not charged.

Order Type:- CODE-SIZE(W)-θ-OC

Example:- PCU-CS12-320-45-S