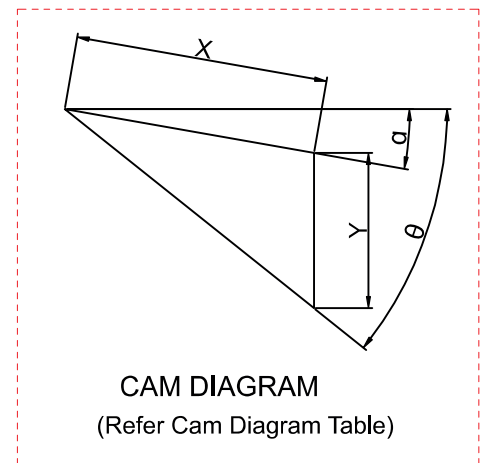
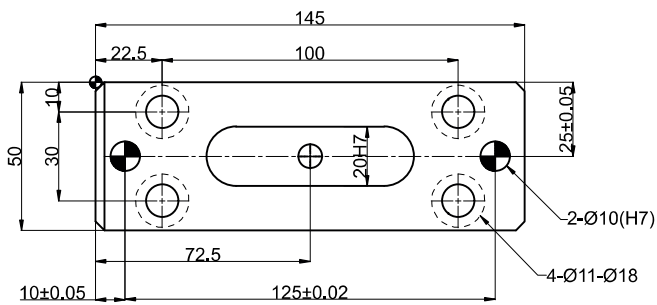
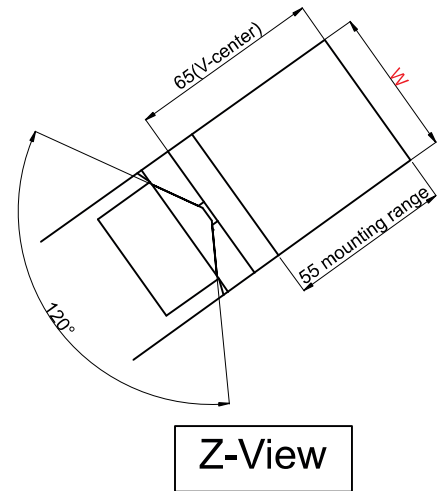
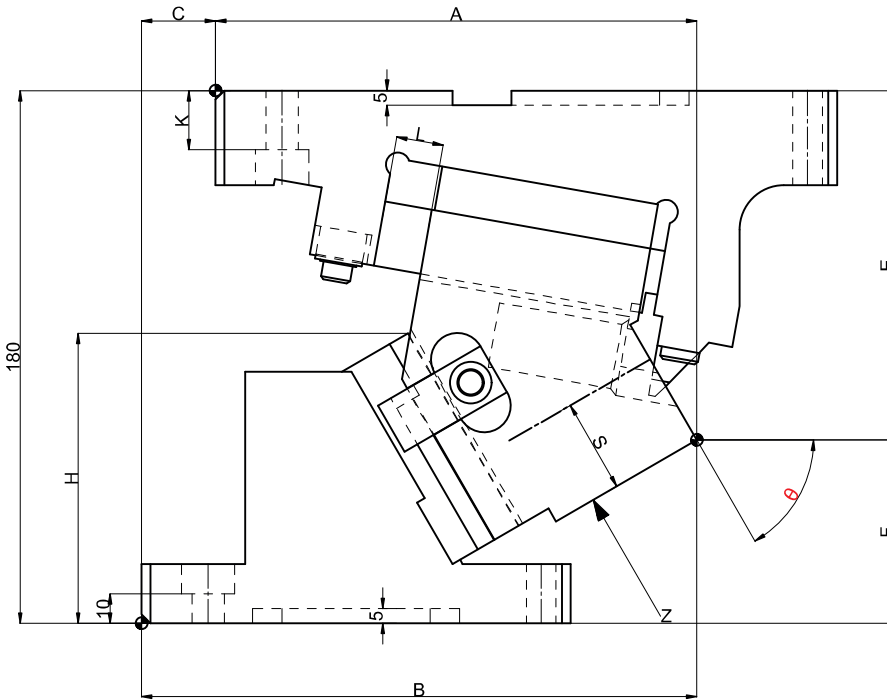
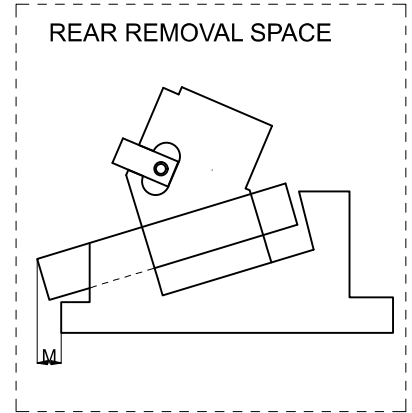
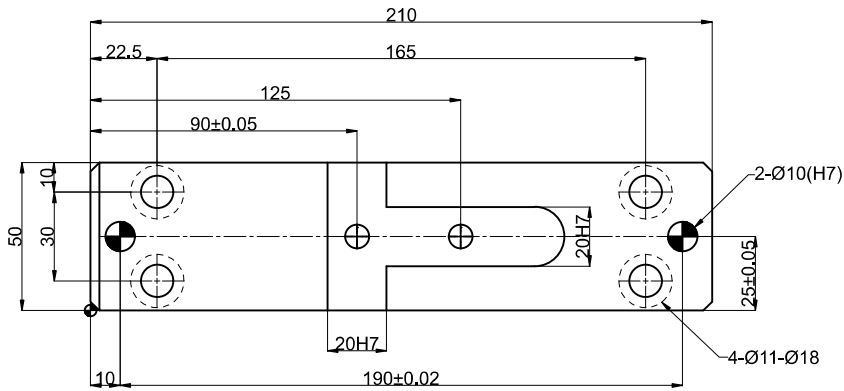


► Cam Unit - PCU-CS-14-50-(55-65)



## ► Cam Unit - PCU-CS-14-50-(55-65)

Cam Dimensions											Cam Diagram		
W	$\theta$	A	B	C	E	F	H	K	L	m	X	Y	$\alpha$
50	55°	168.64	183.64	15	111.04	68.96	96.4	20	15	0	26.1	20	5°
	60°	162.61	187.61	25	118.08	61.92	98		16		31.5	24.5	10°
	65°	155.95	190.95	35	125.44	54.56	99	15			15.6	15.6	15°

Spring Force									
Slide Stroke S	Working force KN (tonf)		Spring load N (kgf)			Total weight kg	Catalog No.	W	$\theta$
	Standard working force	Max. working force	Preload	5mm before bottom dead center	Max. load				
26.1	29.4(3.0)	58.8(6.0)	316(32.2)	952(97.1)	1105(112.6)	9.5	PCU-CS14	50	55°
31.5			263(26.8)	973(99.2)		9.7			60°
36.6			989(100.8)	10.0			65°		

Order Type:-Code-Size(W)- $\theta$

Example:-PCU-CS14-50-60

Alternations:-	
Option Code(OC)	Specification
N12	Change dowel hole diameter $\phi$ 10H7→ $\phi$ 12H7
N13	Change dowel hole diameter $\phi$ 10H7→ $\phi$ 13H7
K	Add 3 locating keys (With 3 hexagon socket head cap screws M8x15)
KA	Add 3 stepped locating keys (With 3 hexagon socket head cap screws M8x15)

Order Type:-Code-Size(W)- $\theta$ -OC

Example:-PCU-CS14-50-60-N12