

► Cam Unit - PCU-CS-15-165-(00-45)

Cam Dimensions																Cam Diagram		
W	θ	A	A1	B	B1	C	E	E1	F	F1	H	K1	N1	y	m	X	Y	α
165	00°	335.84	347.84	207.84	219.84	128	96.98	170	203.02	130	80	180.5	55	73.02	21	32.1	38.3	50°
	05°	335.25	340.8	222.25	227.82	113	100.91	175	199.09	125	98	173		73.32	37	35.5	38.4	45°
	10°	337.27	337.3	236.27	236.30	101	111.09	180	188.91	120	109	165.5	50	67.86	48	38.9	38.9	40°
	15°	329.78	325.45	249.78	245.45	80	122.46	185	177.54	115	120	156.5	45	61.53	66	42.4	39.7	35°
	20°	332.68	323.61	262.68	253.61	70	129.99	190	170.01	110	137	149	42	59.49	71	46.1	40.8	30°
	25°	332.88	319.83	274.88	261.83	58	138.62	195	161.38	105	154	140	37	56.61	83	50	42.3	25°
	30°	334.28	315.39	286.28	267.39	48	148.28	205	151.72	95	125	132.5	30	58.57	90	54.3	44.2	20°
	35°	329.8	305.16	296.8	272.16	33	158.89	215	141.11	85	135	125	155	60.1	100	59	46.8	15°
	40°	321.35	291.18	306.35	276.18	15	170.38	225	129.62	75	117.5	25		61.23	111	64.3	50	10°
	45°	314.86	279.49	314.86	279.49	0	182.66	235	117.34	65				111.5	62.03	116	70.4	54.2

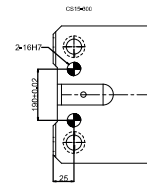
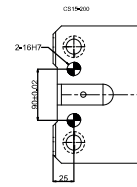
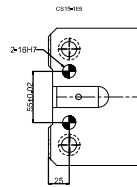
Spring Force						
Slide Stroke S	Working force KN (tonf)	Total weight kg	Catalog Code	W	θ	Spring Code
32.1	294.2(30.0)	76.1	PCU-CS15	165	00°	GK ISO NGK NISO
35.5		74.2			05°	
38.9		73.8			10°	
42.4		73.1			15°	
46.1		72.3			20°	
50.0		72.1			25°	
54.3		71.9			30°	
59.0		72.2			35°	
64.3		72.4			40°	
70.4		65.5			45°	

Spring type						
Spring Code	Spring specification	Spring load N (kgf)				Remarks
		θ	Preload	5mm before bottom dead center	Max. load	
GK	TU250-63.5	—	—	—	3430(350)	Gas Spring
ISO	ϕ 40x178	0	449(45.8)	2344(239.0)	2694(274.7)	Coil Spring (Constant=19.6 N/mm)
		5		2380(242.7)		
		10		2407(245.4)		
		15		2429(247.7)		
		20		2452(250.0)		
		25		2470(251.8)		
		30		2487(253.7)		
		35		2505(255.5)		
		40		2519(256.9)		
45	2537(258.7)					
NGK	—	—	—	—	—	Without gas Spring
NISO	—	—	—	—	—	Without gas Spring

Order Type:- CODE-SIZE(W)- θ

Example:- PCU-CS15-165-00

Alternations-	
Option Code (OC)	Specifications
N	ϕ 16H7 dowel hole is drilled on the cam holder.
NF	Nitrogen gas not charged.



Order Type:- CODE-SIZE(W)- θ -OC

Example:- PCU-CS15-165-00-NF