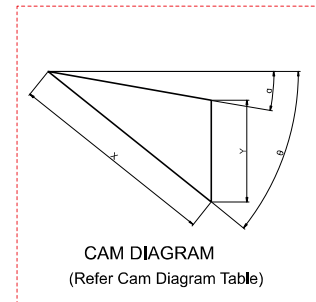
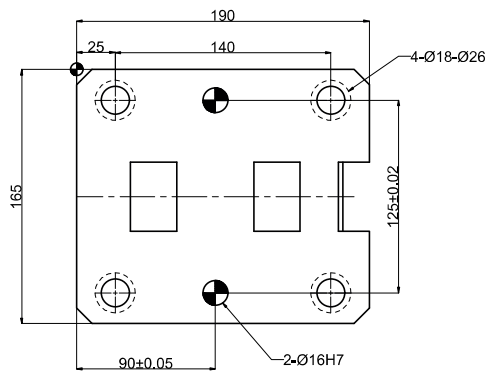
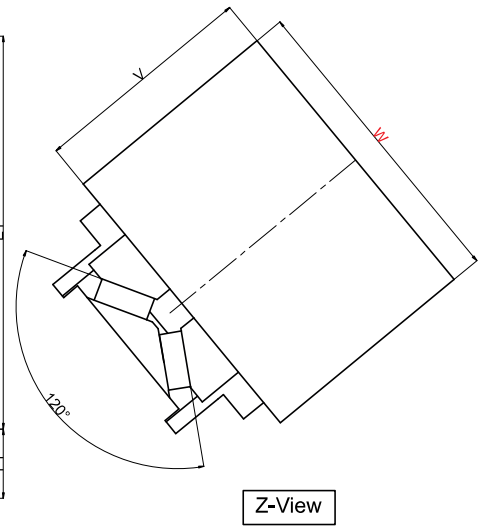
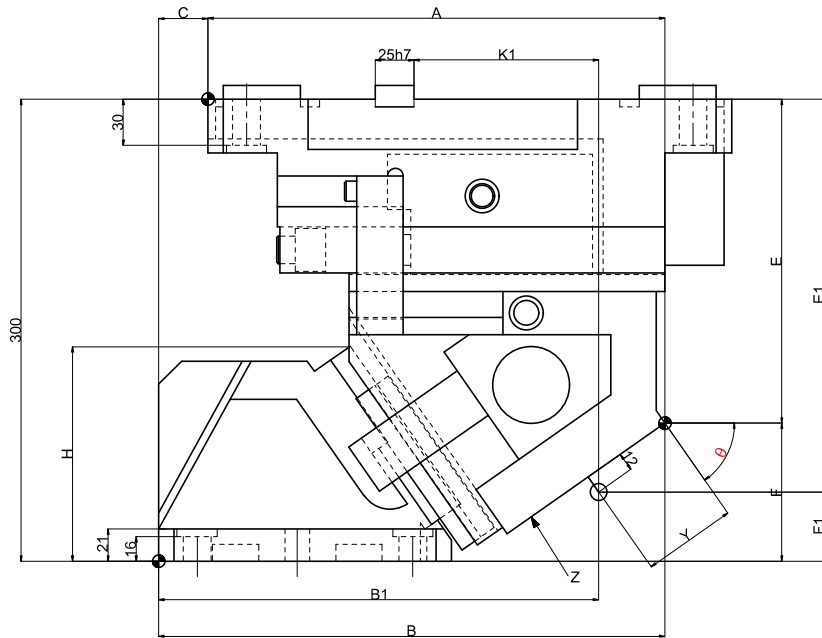
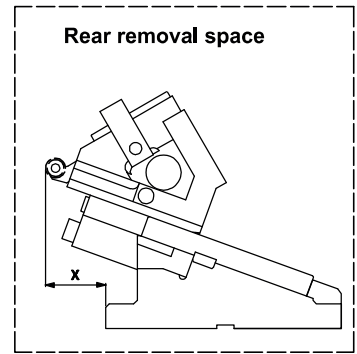
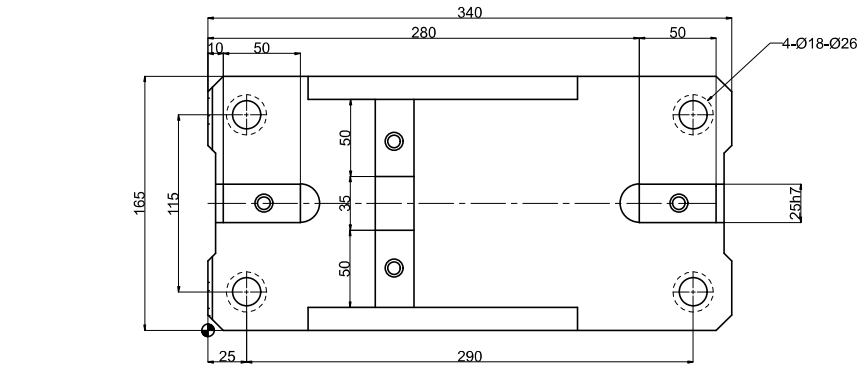


Cam Unit - PCU-CS-15-165-(50-60)



► Cam Unit - PCU-CS-15-165-(50-60)

Cam Dimensions															Cam Diagram			
W	θ	A	A1	B	B1	C	E	E1	F	F1	H	K1	V	y	m	X	Y	α
165	50°	307.27	267.1	322.27	282.1	15	195.63	245	104.37	55	136.3	105.5	120	62.51	81	77.8	59.6	0°
	55°	296.59	253.67	328.59	285.67	32	210.30	255	89.7	45	139.6	120	125	60.8	88	87.2	71.4	0°
	60°	288.56	238.54	333.56	283.54	45	222.26	265	77.74	35	143.2	113.0		64.69	95	100.0	86.6	0°

Spring Force						
Slide Stroke S	Working force KN (tonf)	Total weight kg	Catalog Code	W	θ	Spring Code
77.8	294.2(30.0)	64.3	PCU-CS15	165	50°	GK ISO NGK NISO
87.2		65.2			55°	
100.0		66.6			60°	

Spring type						
Spring Code	Spring specification	Spring load N (kgf)				Remarks
		θ	Preload	5mm before bottom dead center	Max. load	
GK	TU250-63.5	–	–	–	3430(350)	Gas Spring
ISO	ϕ 40x178	50	449(45.8)	2550(260.1)	2694(274.7)	Coil Spring (Constant=19.6 N/mm)
		55		2564(261.4)		
		60		2582(263.3)		
NGK	–	–	–	–	–	Without gas Spring
NISO	–	–	–	–	–	Without gas Spring

Order Type:- CODE-SIZE(W)- θ

Example:- PCU-CS15-165-50

Alternations-	
Option Code (OC)	Specifications
N	ϕ 16H7 dowel hole is drilled on the cam holder.
NF	Nitrogen gas not charged.

Order Type:- CODE-SIZE(W)- θ -OC

Example:- PCU-CS15-165-50-NF