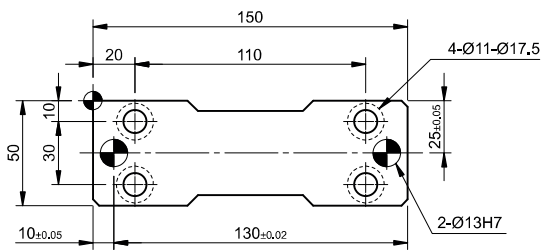
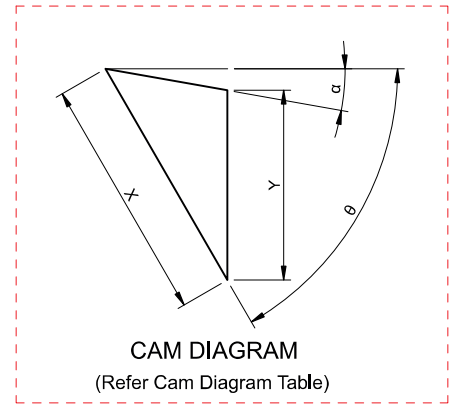
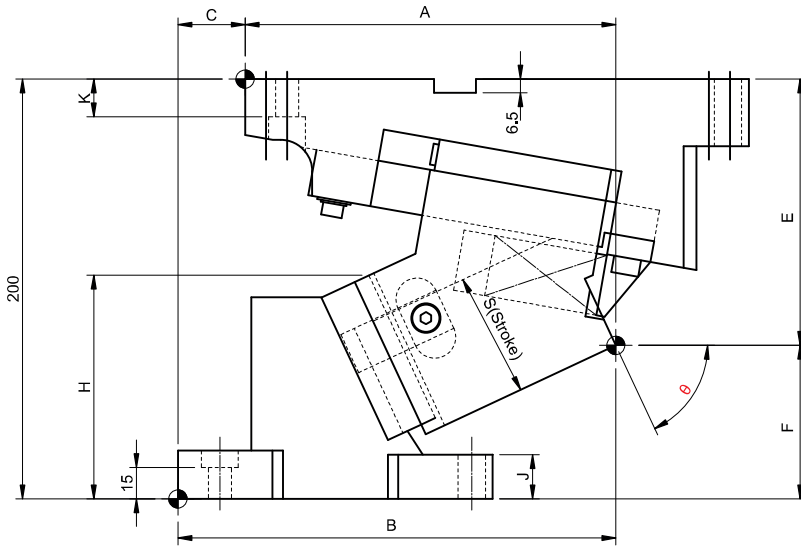
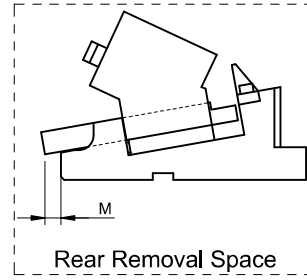
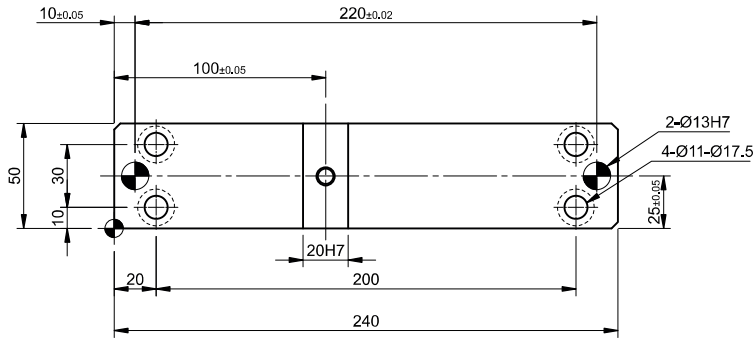
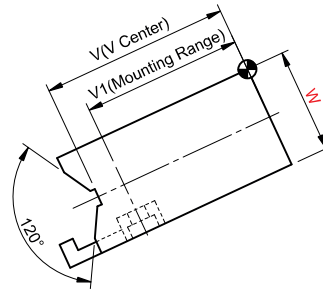


► Cam Unit - PCU-CS2-50-(55-70)



(Refer Cam Dimension Table)



► Cam Unit - PCU-CS2-50-(55-70)

Cam Dimension														Cam Diagram		
W	Θ	A	B	C	E	F	H	J	K	L	V	V1	M	X	Y	α
50	55°	189.83	189.83	0	116.3	83.7	104.8	21	20	30	75	65	0	52.1	40.1	5°
	60°	179.27	194.27	15	125.08	74.92	105.5		18					25	90	75
	65°	176.60	208.6	32	126.87	73.13	106.5			58.3	48.5					
	70°	177.00	215	38	135.83	64.17	107			57.6	50.6					

Spring Force									
Slide stroke S	Working force KN (tonf)		Spring load N (kgf)			Total weight kg	Catalog No.	W	Θ
	Standard Working force	Max. working force	Preload	5mm before bottom dead center	Max. load				
52.1	19.6(2.0)	39.2(4.0)	163(16.6)	900(91.8)	979(99.9)	10.8	PCU-CS2	50	55°
59.1				911(92.9)		11.2			60°
58.3			299(30.5)	922(94.0)		11.6			65°
57.6			226(23.1)	916(93.4)		980(100.0)			12.0

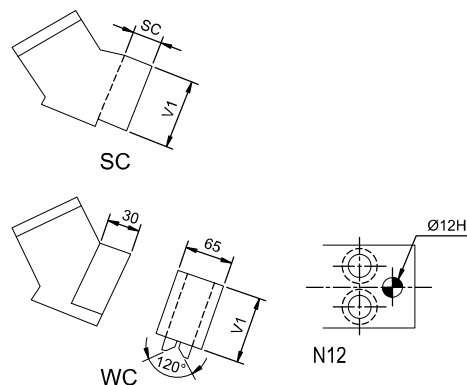
Order Type - Code-Size(W)-Θ

Example - PCU-CS2-50-60



Alternations -

Option Code(OC)	Specifications
K	Dedicated key is Attached.(it is not assembled to the main unit)
N12	The Dowel Pin holes for the cam holder and cam driver are changed to ø12H7
SC	The mount surface is extended forward in the range of 1 to 60 mm (in the increments of 1 mm)
WC	The mount width is changed to 65.



Order Type:- CODE-SIZE(W)-Θ-OC

Example:- PCU-CS2-50-60-K