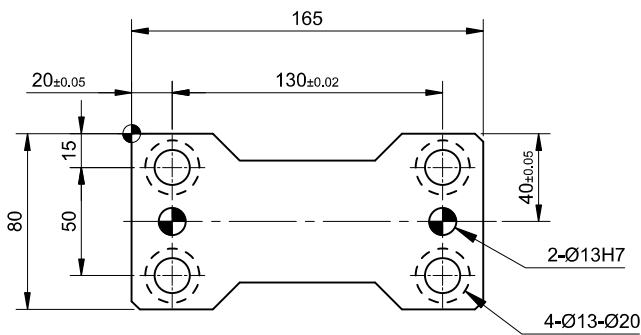
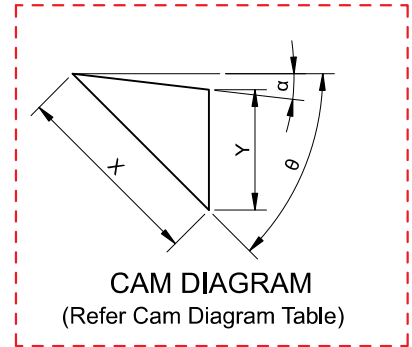
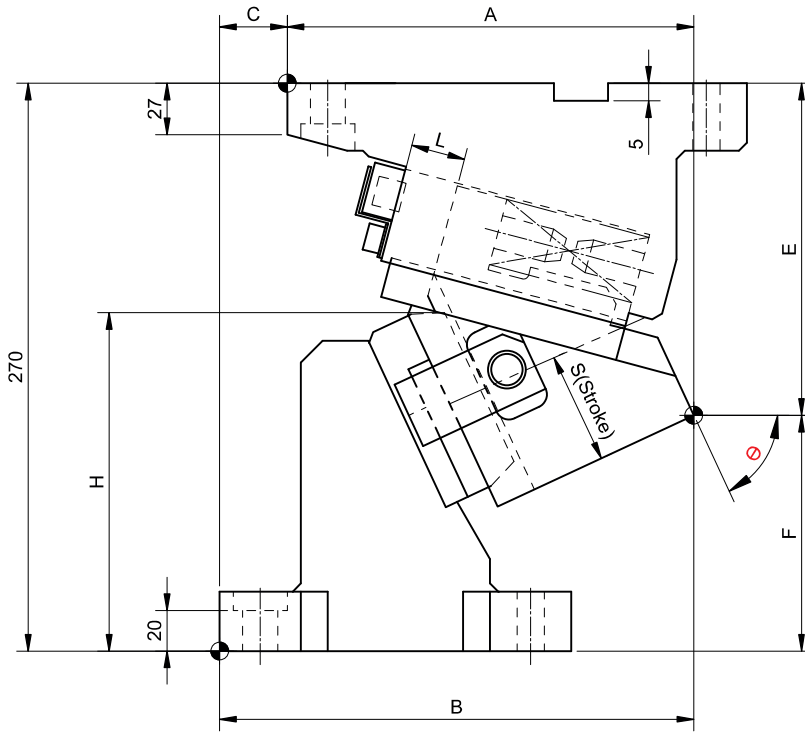
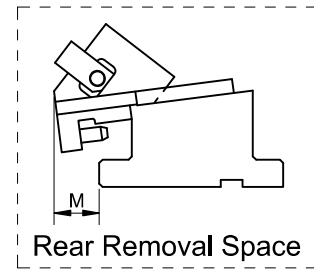
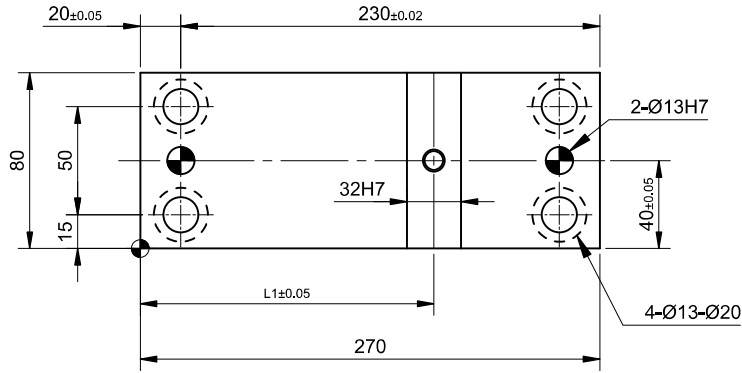
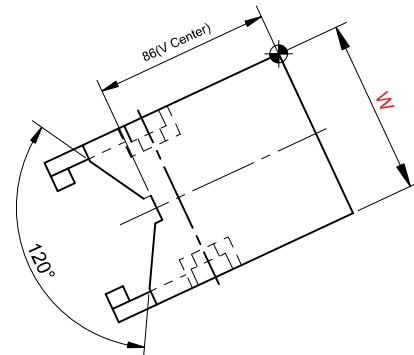


► Cam Unit - PCU-CS2-80-(60-70)



(Refer Cam Dimension Table)

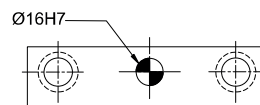


► Cam Unit - PCU-CS2-80-(60-70)

Cam Dimension											Cam Diagram		
W	Θ	A	B	C	E	F	H	L	L1	M	X	Y	α
80	60°	240.64	240.64	0	176.59	93.41	157.7	50	170	75	98.5	76.6	10°
	65°	235.61	240.61	5	188.65	81.35	157.4	35		74	81.6	67.8	10°
	70°	227.83	237.83	10	195.53	74.47	157.1	30		75	67.8	76	

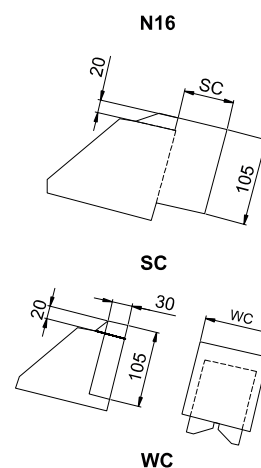
Spring Force									
Slide stroke S	Working force KN (tonf)		Spring load N (kgf)			Total weight kg	Catalog No.	W	Θ
	Standard Working force	Max. working force	Preload	5mm before bottom dead center	Max. load				
98.5	39.2(4.0)	78.5(8.0)	270(27.5)	1553(158.3)	1620(165.2)	23.2	PCU-CS2	80	60°
81.6			323(32.9)	1386(141.3)	1454(148.2)	23.7			65°
86.4			404(41.2)	1547(157.8)	1616(164.8)	23.9			70°

Order Type - Code-Size(W)-Θ
Example - PCU-CS2-80-65



Alternations-

Option Code(OC)	Specifications
K	Dedicated key is Attached. (it is not assembled to the main unit)
N16	The Dowel Pin holes for the cam holder and cam driver are changed to Ø16H7
SC	The mount surface is extended forward in the range of 0 to 60 mm (in the increments of 1 mm)
WC	The mount width is changed to 100 or 120, WC100 or WC120 to be ordered.



Order Type:- Code-Size(W)-Θ-OC
Example:- PCU-CS2-80-65-K