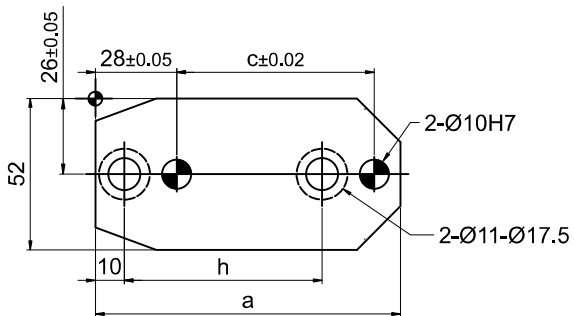
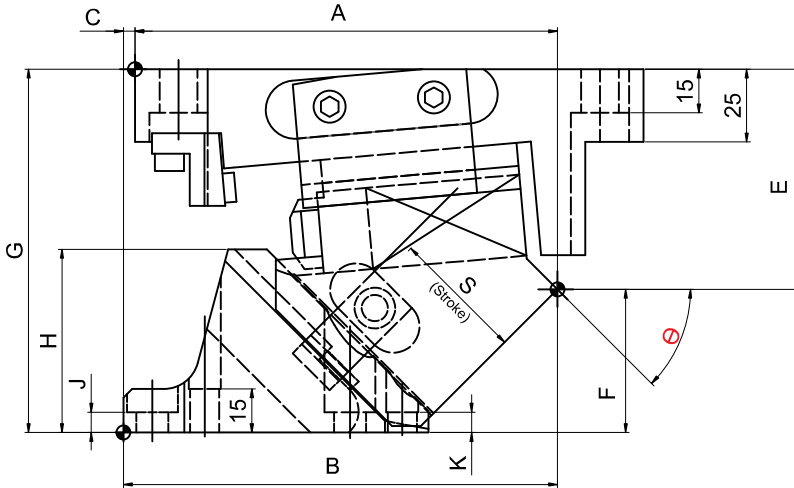
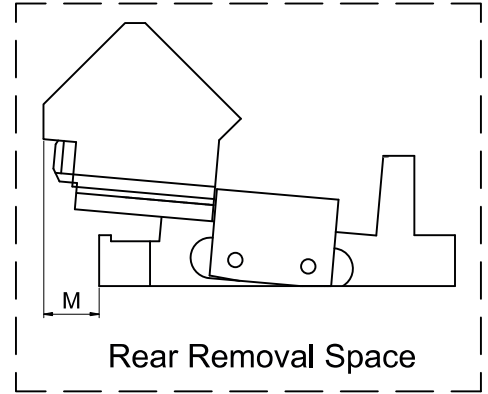
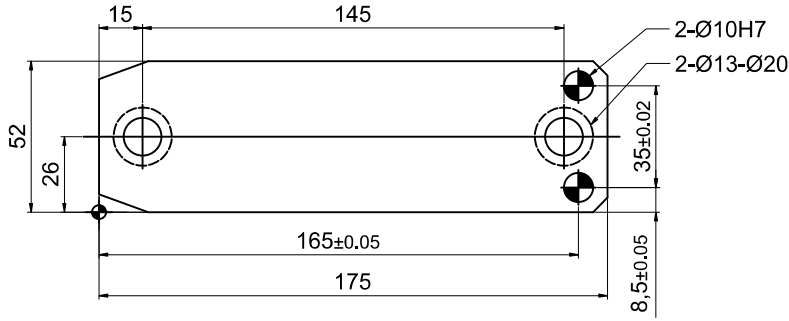
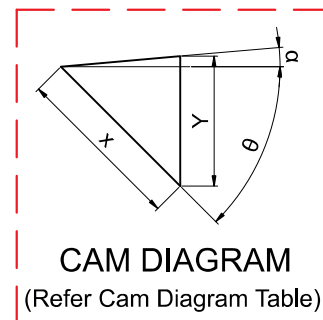
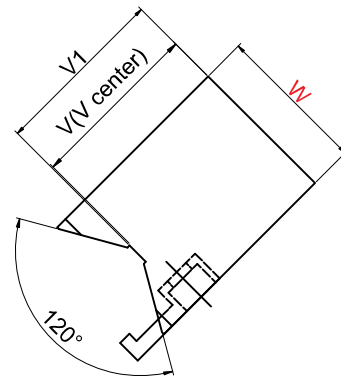


► Cam Unit - PCU-CS3-52-(45-80)



(Refer Cam Dimension Table)



## ► Cam Unit - PCU-CS3-52-(45-80)

Cam Dimension																		Cam Diagram		
W	$\theta$	A	B	C	E	F	G	H	J	K	L	V	V1	a	c	h	M	X	Y	$\alpha$
52	45°	145.41	149.41	4	75.73	49.27	125	63	7	7	30	59	60	105	68	68	31	42.3	32.5	5°
	50°	143.92	152.92	9	79.43	45.57		67	32								46.7	35.7		
	55°	144.67	154.67	10	82.97	42.03		73	33								52.3	42.8		
	60°	150.69	159.69	9	90.28	34.72		74	26								60	51.9		
	65°	130.16	175.16	45	99.54	25.46	12	73	15	20	70	70	111	55	55	47	43	47.3	42.9	0°
	70°	133.62	173.62	40	106.97	18.03		72.5									38	58.5	54.9	
	75°	148.74	178.74	30	124.59	25.41	150	83	12	10	110	55	55	47	46.3	44.8				
	80°			30					10	110	55	55	47	57.5	56.7					

Spring Force									
Slide Stroke S	Working force KN (tonf)		Spring load N (kgf)			Total weight kg	Catalog code	W	$\theta$
	Standard working force	Max. working force	Preload	5mm before bottom dead center	Max. load				
42.3	14.7(1.5)	29.4(3.0)	245(25.0)	894(91.2)	980(99.9)	5.0	PCU-CS3	52	45°
46.7				902(91.9)		5.0			50°
52.3				909(92.7)		5.0			55°
60.0				919(93.7)		5.2			60°
47.3			327(33.3)	912(93.0)	981(100.0)	5.9			65°
58.5				925(94.4)		5.9			70°
46.3				910(92.8)		7.8			75°
57.5				436(44.5)		556(56.7)			7.7

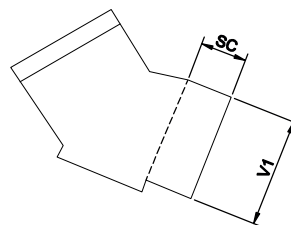
**Order Type - Code-Size(W)- $\theta$**

**Example - PCU-CS3-52-45**



### Alternations-

Option Code(OC)	Specifications
SC	The mount surface is extended in the range from 1 to 50 mm (in the increments of 1 mm)



**SC**

**Order Type :- Code-Size(W)- $\theta$ -OC**

**Example :- PCU-CS3-52-45-SC**