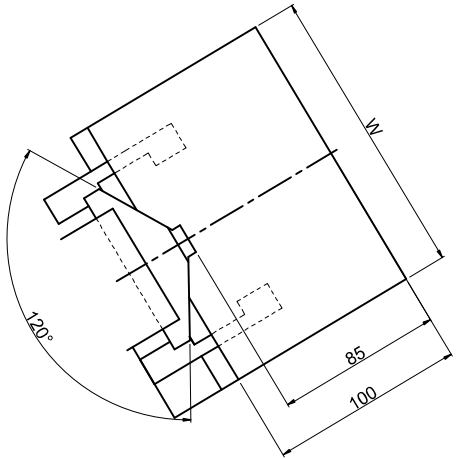
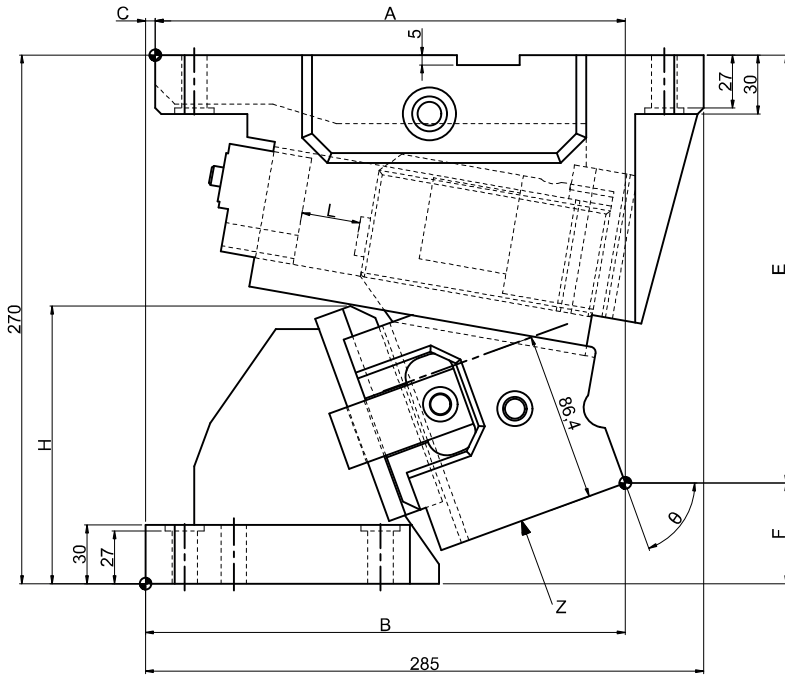
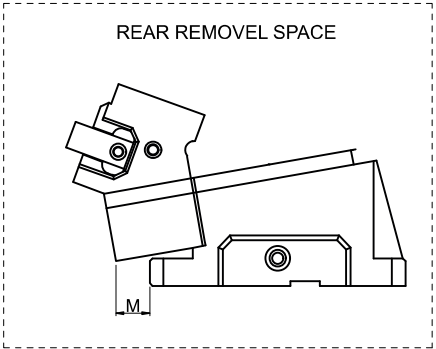
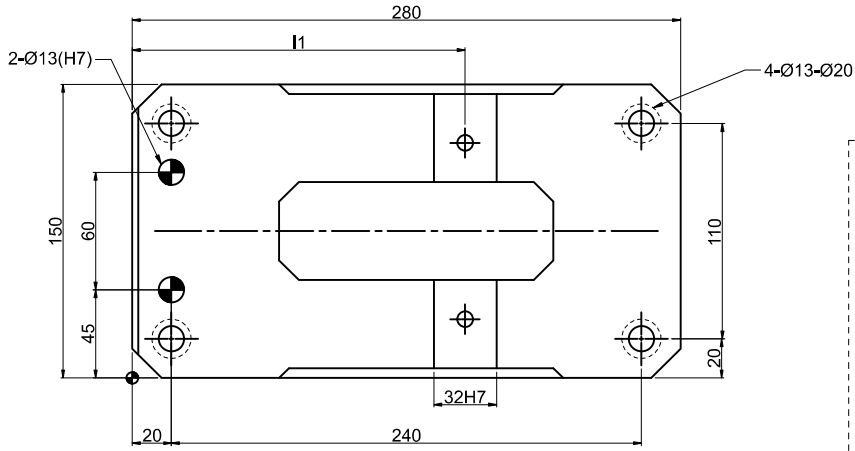
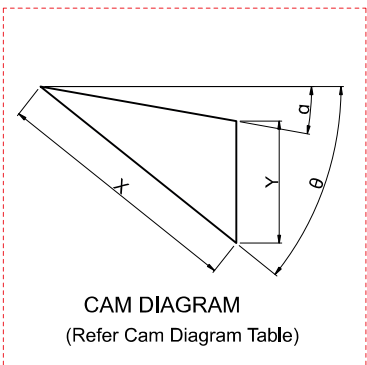
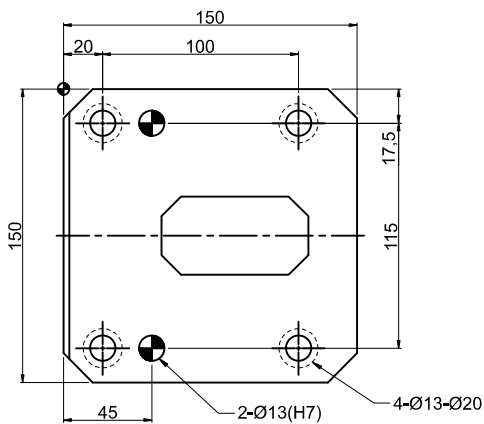


Cam Unit - PCU - CS2.1-150-(60-70)



Z-View



CAM DIAGRAM
(Refer Cam Diagram Table)

► Cam Unit - PCU - CS2.1-150-(60-70)

Cam Dimensions											Cam Diagram		
W	θ	A	B	C	E	F	H	L	I1	M	X	Y	α
150	60°	246.60	246.60	0	193.92	76.08	138.2	50	170	100	98.5	76.6	10°
	65°	241.35	241.35		206.49	63.51	138.6	40		104	93.2	77.5	10°
	70°	245.01	240.01		218.56	51.44	141.9	30		110	86.4	76	10°

Spring Force									
Slide Stroke S	Working force KN (tonf)		Coil Spring load N (kgf)			Total weight kg	Catalog Code	W	θ
	Standard working force	Max. working force	Preload	5mm before bottom dead center	Max. load				
98.5	123.6(12.6)	185.3(18.9)	215(21.9)	7718(787.0)	9555(974.3)	41.5	PCU-CS2.1	150	60°
93.2			484(49.3)	8012(816.9)		42.2			65°
86.4			753(76.7)	8306(846.9)		43.5			70°

Order Type:- CODE-SIZE(W)- θ

Example:- PCU-CS2.1-150-70

Alternations-	
Option Code (OC)	Specifications
N12	Change dowel hole diameter $\phi 13H7 \rightarrow \phi 12H7$
N16	Change dowel hole diameter $\phi 13H7 \rightarrow \phi 16H7$
S	With collars, screws and nuts to fix bottom dead center.
K	Add 2 locating keys (With 2 hexagon cocket head cap screws M8x15)
TK	T-keywaying Add 6 locating keys (With 6 hexagon socket head cap screws M8x15)

Order Type:- CODE-SIZE(W)- θ -OC

Example:- PCU-CS2.1-150-70-N12

