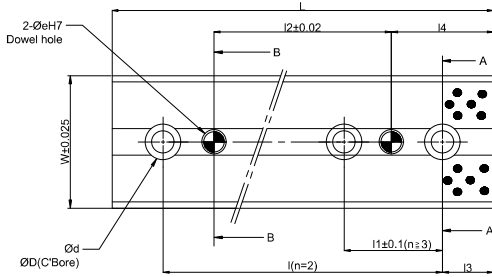
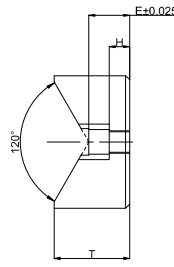


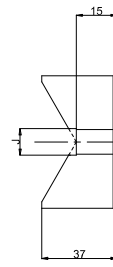
V-GUIDE BLOCK (PCU-CA2)



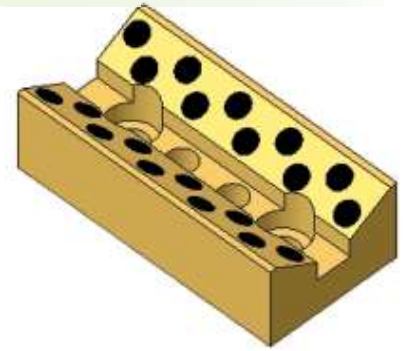
n is the number of screw hole



Section A-A



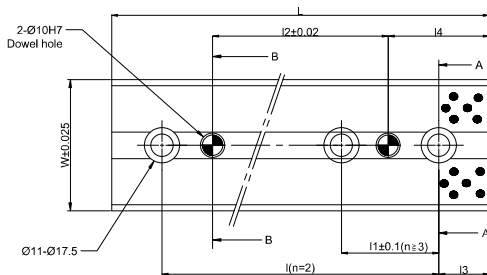
Section B-B



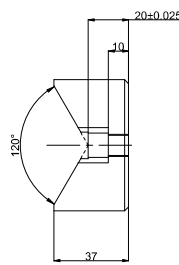
I	I1	I2	I3	I4	n (holes)	e	d	D	E	J	H	T	Catalog No.	W	L	
45	-	15	15	30	2	8	9	14	15	11	4	24	PCU-CA2	35	75	
60		20	40	100												
85		45	20	40											125	
110		70	20	40											150	
45		15	15	30											75	
60	20	20	40	100												
75	25	25	50	125												
100	50	20	40	150												
60	20	20	40	100												
-	50	50	25	50	3	10	11	17.5	18	13	8	31		PCU-CA2	65	150
		100			4								200			
		150			5								250			
		200			6								300			

Material : Copper alloy Special solid lubricant (embedded)
 Order Type : PCU-CA2-W-L
 Example : PCU-CA2-35-100

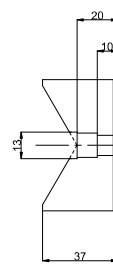
V-GUIDE BLOCK (PCU-CA3)



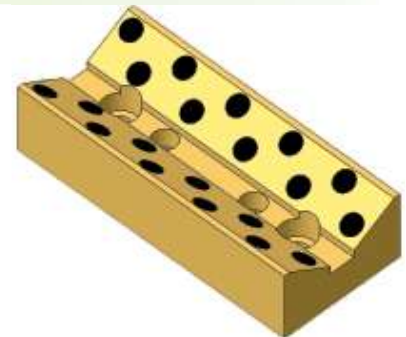
n is the number of screw hole



Section A-A



Section B-B



I	I1	I2	I3	I4	n (holes)	Catalog No.	W	L		
60	-	20	20	40	2	PCU-CA3	65	100		
75		25	25	40				125		
100		50	25	50				150		
-	75	100	25	50	3			PCU-CA3	65	200
	100	150								250
	125	200								300

Material : Copper alloy Special solid lubricant (embedded)
 Order Type : PCU-CA3-W-L
 Example : PCU-CA3-65-100