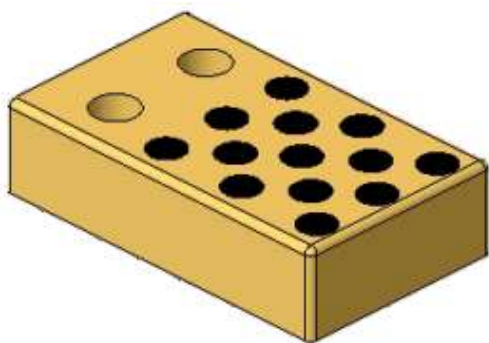
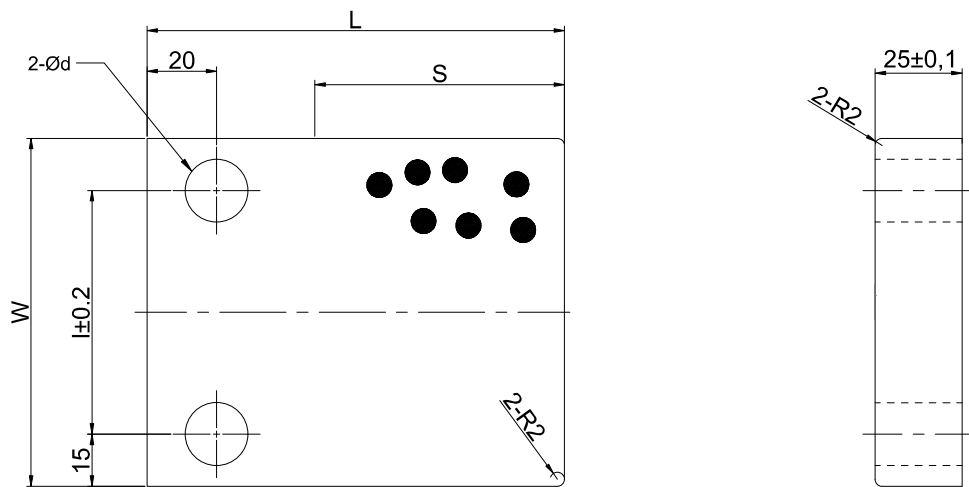


► PAD GUIDE PLATE (PCU-CA10)-B



| S | I | Ø d | Catalog No. | W | L | |
|----|-----|-----|-------------|-----|-----|-----|
| 40 | 30 | 13 | PCUCA-10 | 60 | 80 | |
| 60 | | | | | 100 | |
| 80 | | | | | 120 | |
| 40 | 70 | 18 | | 100 | 80 | |
| 60 | | | | | 100 | |
| 80 | | | | | 120 | |
| 40 | 120 | | | 18 | 150 | 80 |
| 60 | | | | | | 100 |
| 80 | | | | | | 120 |

Material : Copper alloy Special solid lubricant (embedded)
 Order Type : PCU-CA10-W-L
 Example : PCU-CA10-60-120