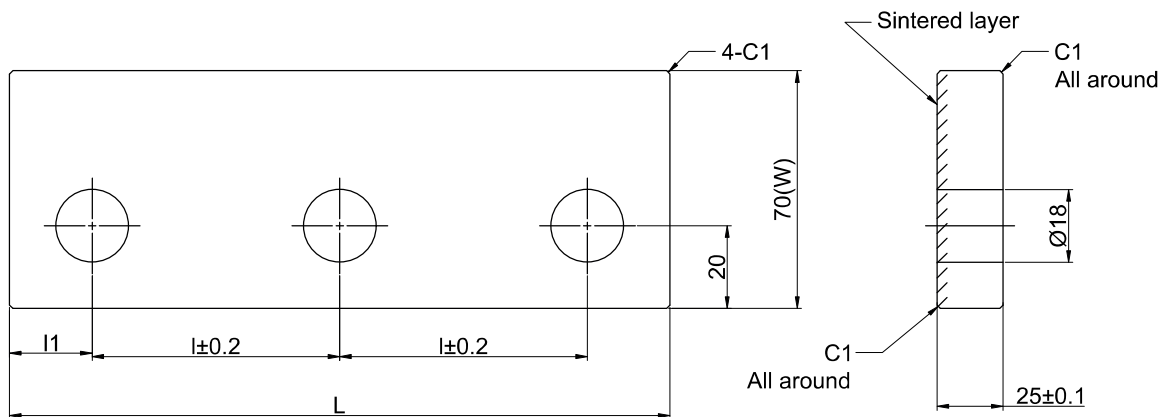
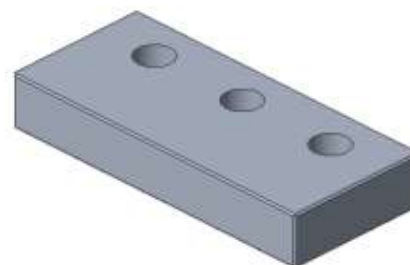


## ▶ UPPER PLATE (PCU-CA40)-S

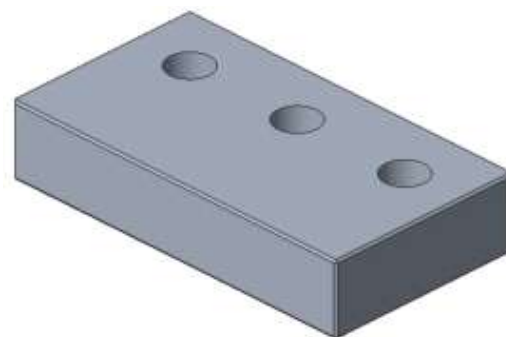
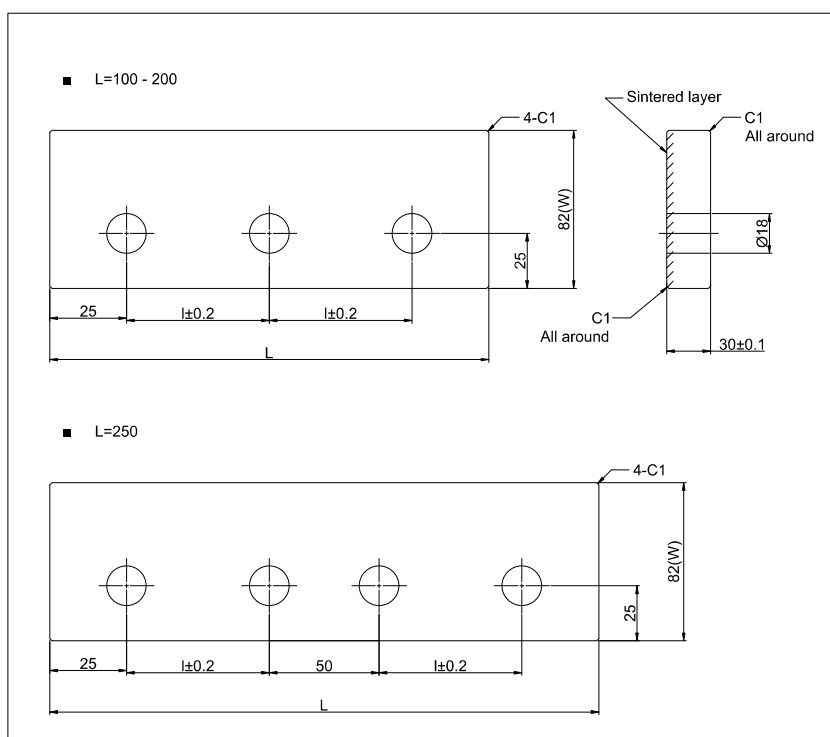


| l  | l1 | Catalog No. | (W) | L   |
|----|----|-------------|-----|-----|
| 50 | 30 | PCU-CA40    | 70  | 160 |
| 70 |    |             |     | 200 |
| 85 | 35 |             |     | 240 |

Material : EN8 Special sintered alloy  
 Order Type : PCU-CA40-W-L  
 Example : PCU-CA40-70-160



## ▶ PCU-CA41



| l  | Catalog No. | (W) | L   |
|----|-------------|-----|-----|
| 50 | PCU-CA41    | 82  | 150 |
| 75 |             |     | 200 |
|    |             |     | 250 |

Material : EN8 Special sintered alloy  
 Order Type : PCU-CA41-W-L  
 Example : PCU-CA41-82-200